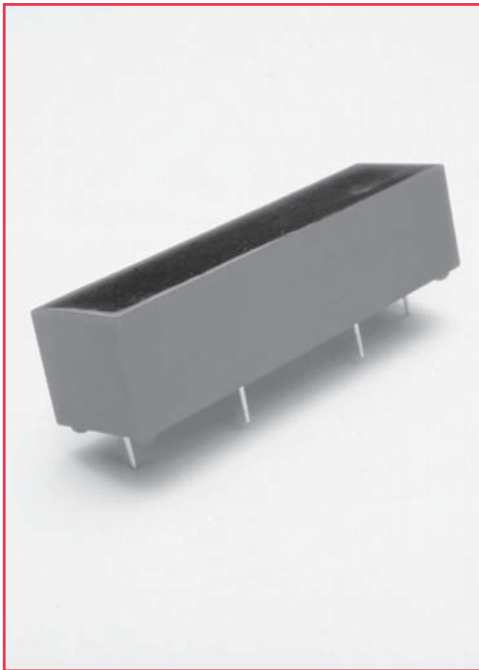


5500 Series/High Voltage Reed Relays

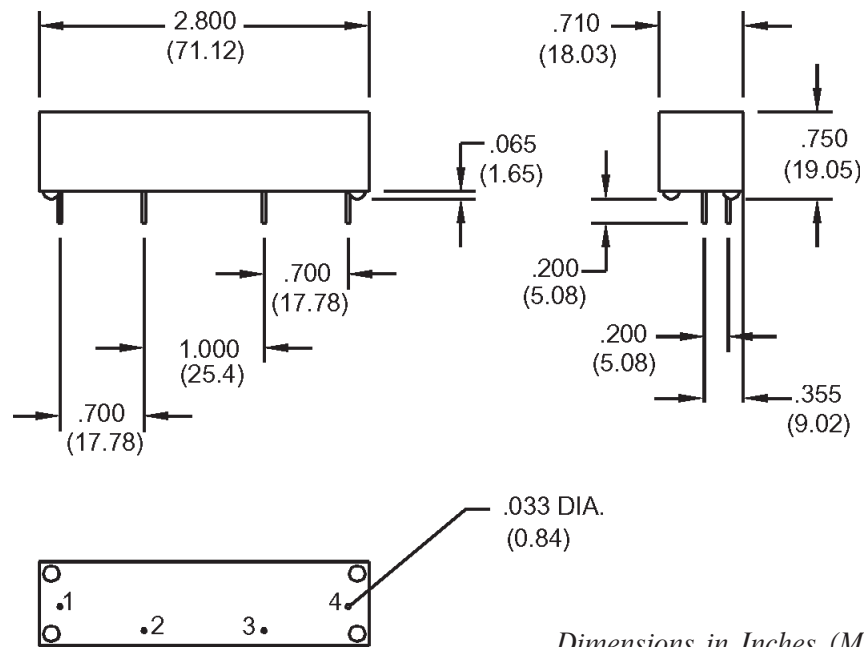


High Voltage Reed Relays

The 5500 Series High Voltage Reed Relays are ideally suited to the needs of Instrumentation, Industrial Process Controls and General Purpose requirements. The specification tables allow you to select the appropriate relay for your particular application. Applications include medical and hipot test instruments, and cable test equipment. If your requirements differ, please consult your local representative or Coto's Factory.

5500 Series Features

- ◆ High Dielectric Strength - 10,000 Volts isolation across contacts
- ◆ High Contact Rating - 200 Watts
- ◆ Hermetically sealed Tungsten contacts for long life
- ◆ Low contact resistance - 0.030 Ω typical
- ◆ Magnetic Shield standard
- ◆ Custom lead terminations and packages available



Bottom View

Dimensions in Inches (Millimeters)

Ordering Information

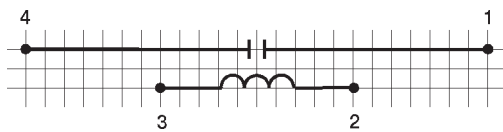
Part Number	XXXX-XX-1	Coil Voltage
Model Number		
5501 5502		05=5 volts
5503 5504		12=12 volts
		24=24 volts

5500 Series/High Voltage Reed Relays

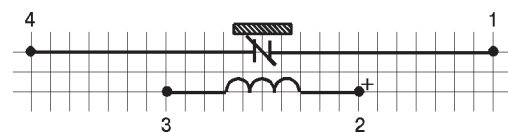
Model Number Parameters

Test Conditions	Units	5501	5502 ²	5503	5504 ²
		1 Form A High Voltage Isolation	1 Form B High Voltage Isolation	1 Form A Load Switching	1 Form B Load Switching
COIL SPECS.					
Nom. Coil Voltage	VDC	5 12 24	5 12 24	5 12 24	5 12 24
Max. Coil Voltage	VDC	6.5 15 30	6.5 15 30	6.5 15 30	6.5 15 30
Coil Resistance	Ω	40 175 575	40 175 575	40 175 575	40 175 575
Operate Voltage	VDC - Max.	3.75 9.0 18.0	3.75 9.0 18.0	3.75 9.0 18.0	3.75 9.0 18.0
Release Voltage	VDC - Min.	0.5 1.0 2.0	0.5 1.0 2.0	0.5 1.0 2.0	0.5 1.0 2.0
CONTACT RATINGS					
Switching Voltage	Volts	7500	7500	3500	3500
Switching Current	Amps	3.0	3.0	3.0	3.0
Carry Current	Amps	5.0	5.0	5.0	5.0
Contact Rating	Watts	50	50	200	200
Life Expectancy-Typical ¹	x 10 ⁶ Ops.	100	100	100	100
Static Contact Resistance (max. init.)	Ω	0.080	0.080	0.200	0.200
RELAY SPECIFICATIONS					
Insulation Resistance (minimum)	Ω	10 ¹⁰	10 ¹⁰	10 ¹⁰	10 ¹⁰
Capacitance - Typical Across Open Contacts	pF	1.5	1.5	1.5	1.5
Dielectric Strength (minimum)	VDC/peak AC VDC/peak AC	10,000 10,000	10,000 10,000	7500 10,000	7500 10,000
Operate Time - including bounce - Typical	msec.	3.0	3.0	3.0	3.0
Release Time - Typical	msec.	3.0	3.0	3.0	3.0

Top View: Grid = .1"x.1" (2.54mm x 2.54mm)



5501, 5503



5502, 5504

Notes:

¹Consult factory for life expectancy at other switching loads.

²This relay contains a bias magnet. Correct coil polarity must be observed. Models 5502 and 5504 susceptible to magnetic interaction due to bias internal magnet.

Environmental Ratings

Storage Temp: -35°C to +100°C

Operating Temp: -20°C to +85°C

Solder Temp: 270°C max; 10 sec. max

The operate and release voltage and the coil resistance are specified at 25°C. These values vary by approximately 0.4%/°C as the ambient temperature varies.

Vibration: 20 G's to 2000 Hz; Shock: 50 G's